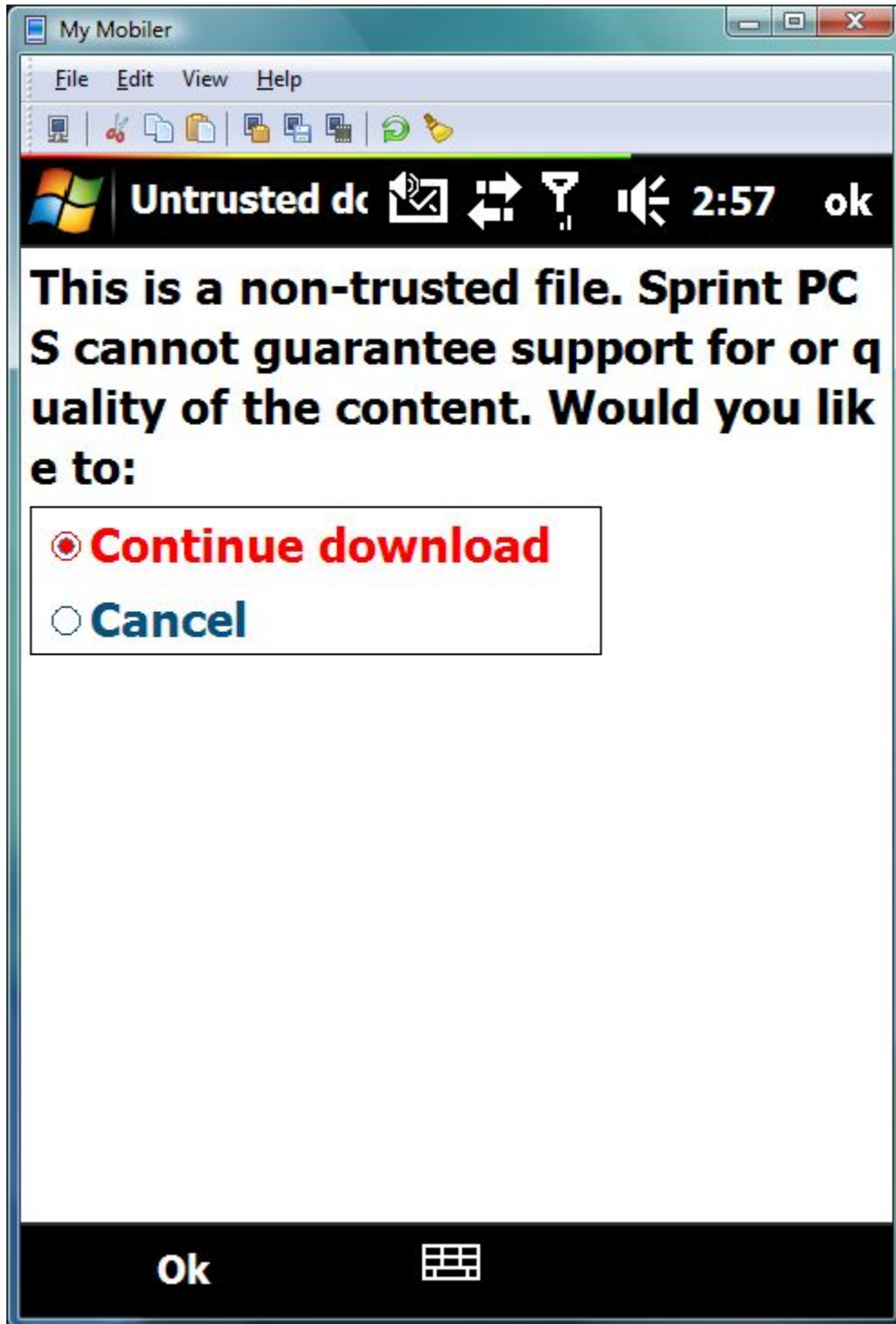
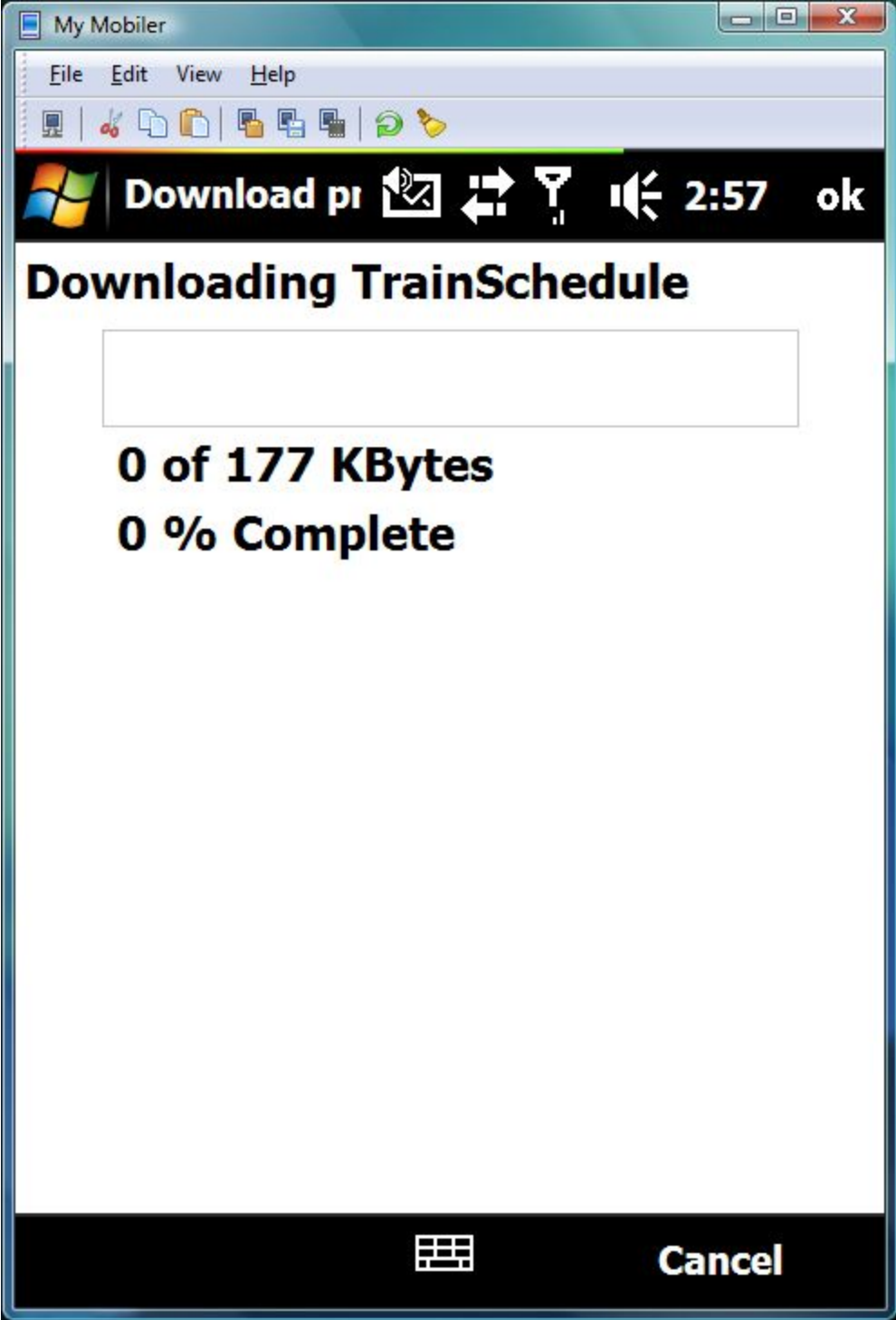


Install Titan Runtime onto the Device, not a storage card, after installing Titan on a Sprint Device:

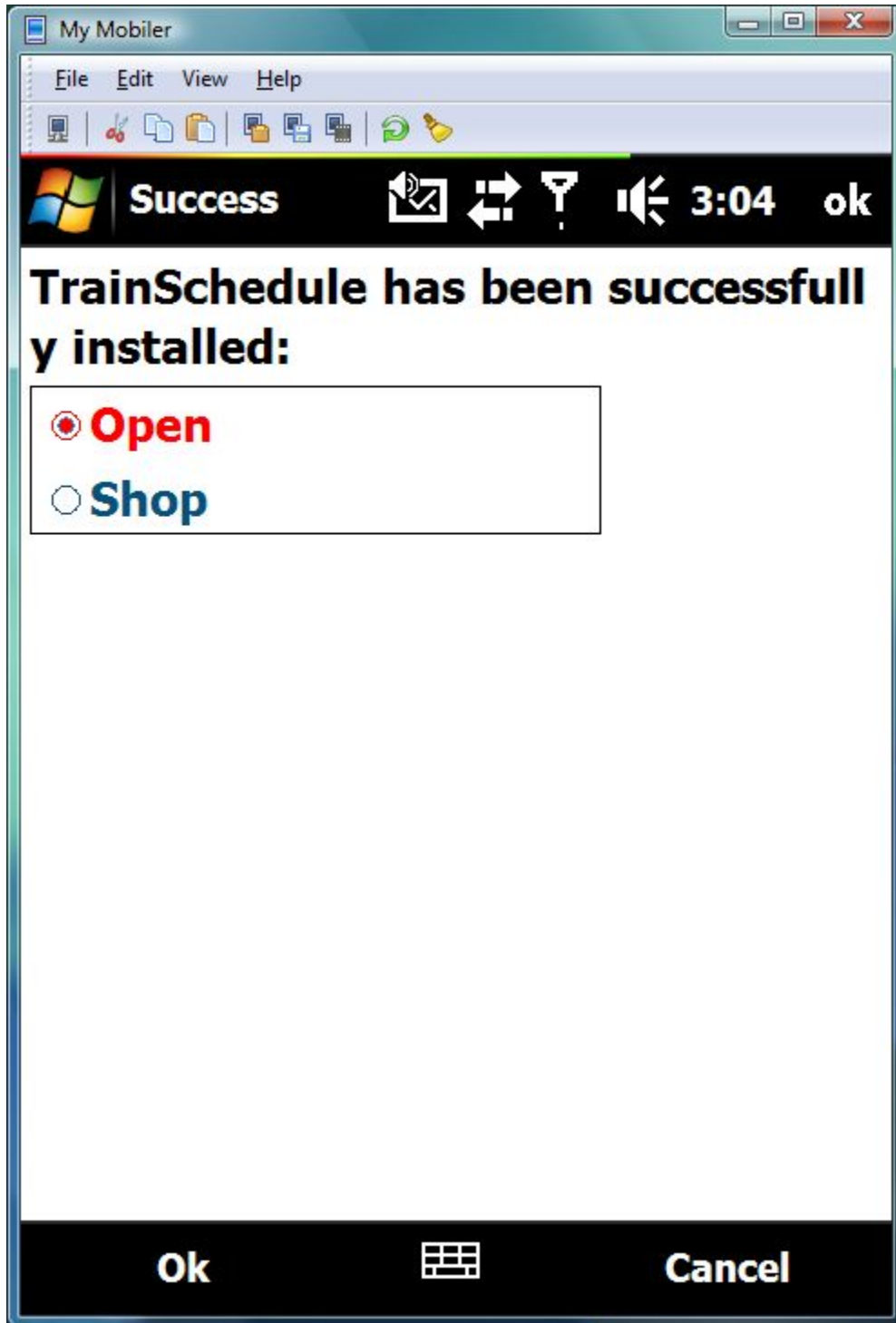
Open TrainSchedule (now RailBandit)

Select Continue Download for the non-trusted file, and click OK

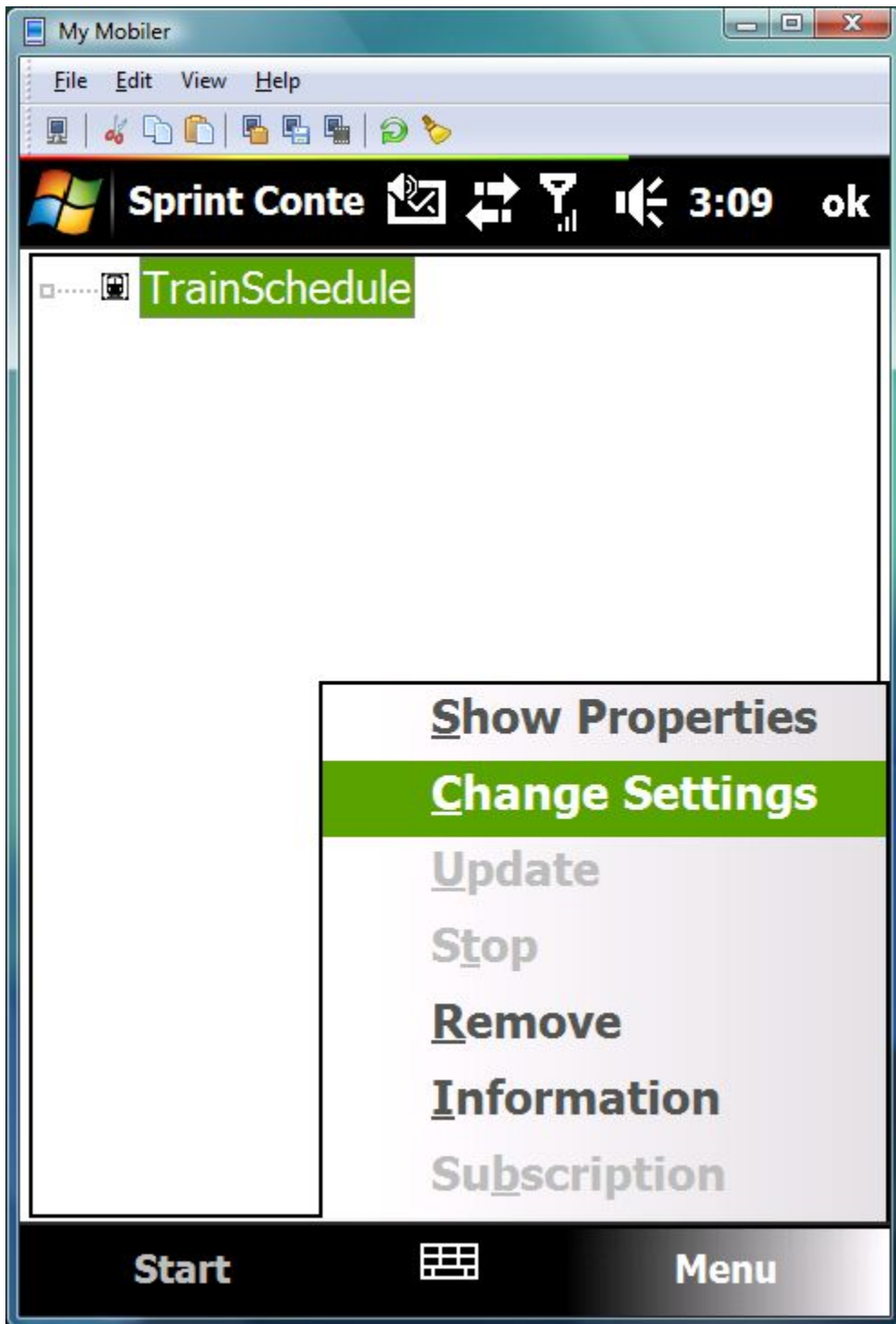




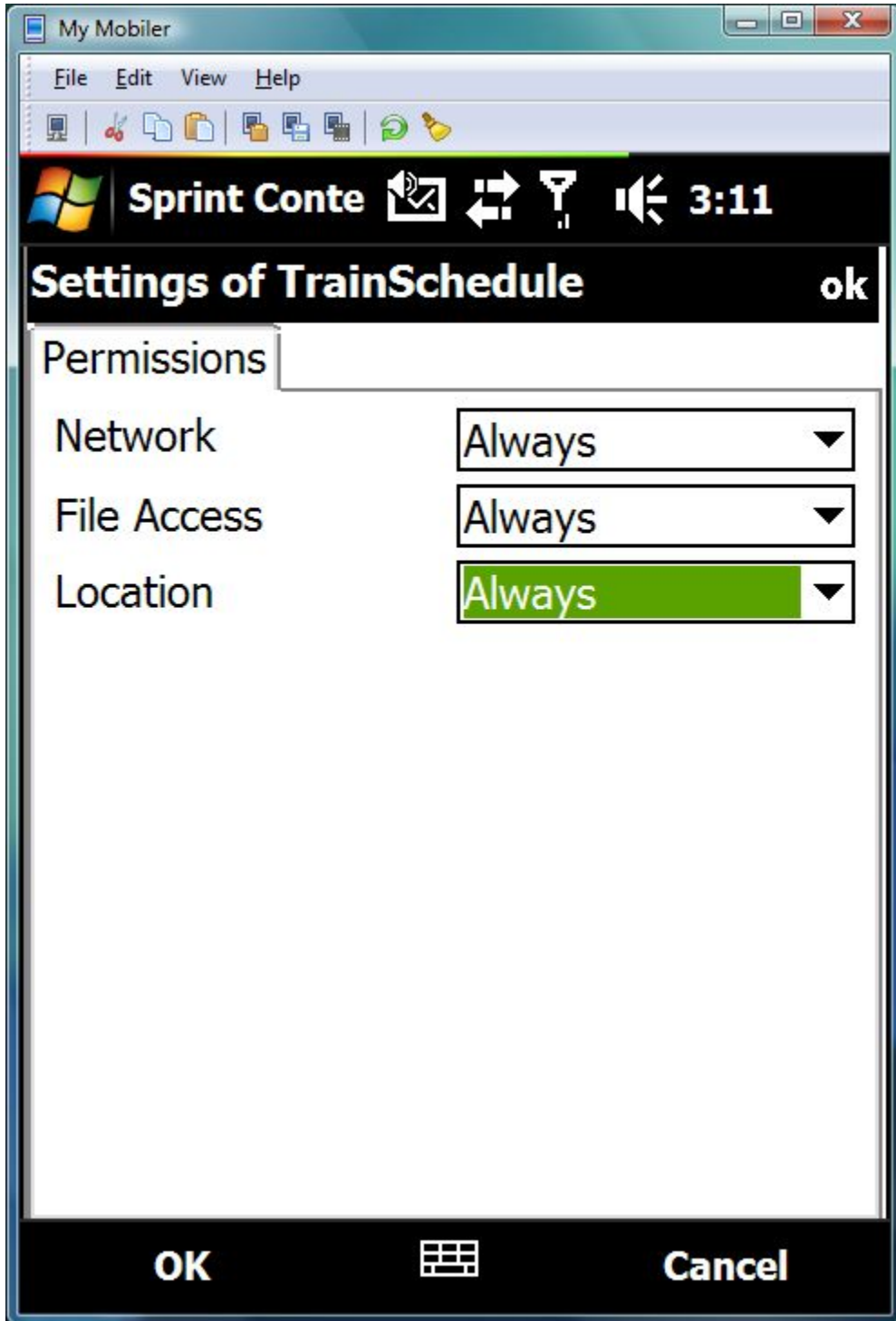
Select Open



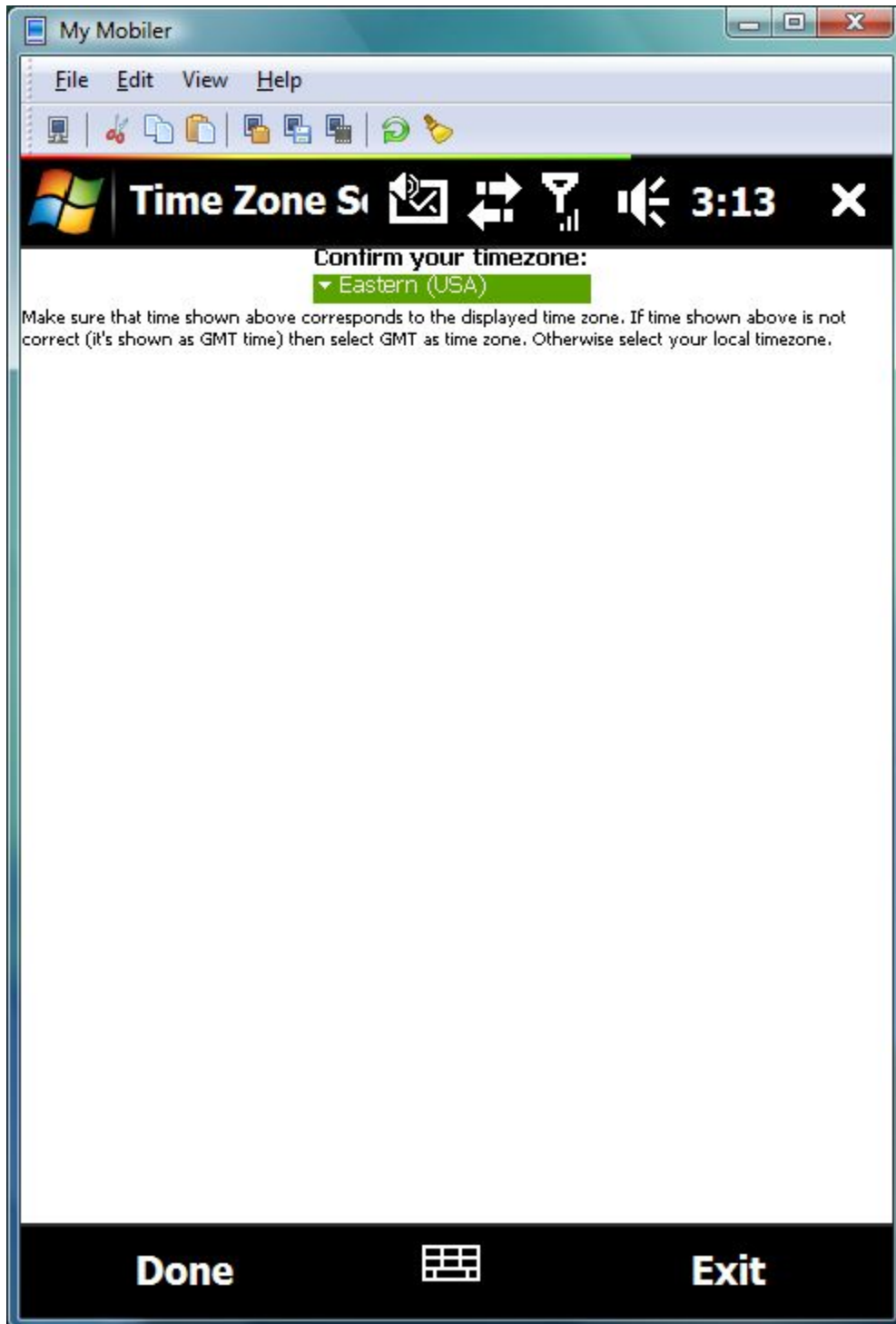
Within The Sprint Content Manager (TITAN) Highlight TrainSchedule and click on Change Settings



Set all three permissions to always to allow Schedule updates, GPS, and Internet features and click OK



The first time you open TrainSchedule, you will be prompted to select your time zone, click Done



Next you will be prompted for your Startup method. 14 days ahead for future trips, 24 hours for closer trips. Then click preview

